



CHANTREY P



A collection of 2, 3, 4 & 5 bedroom homes
in the historic market town of Market Rasen



chestnuthomes.co.uk

HELLO



RELAX... they're Chestnut Homes

From the moment you step inside one of our homes, you'll discover superb modern living which has been designed, crafted and built to high standards.

Having developed across Lincolnshire for the past 30 years, we enjoy an enviable reputation for not only building homes of superior quality but also creating attractive well-planned developments where new communities grow and flourish. Basically we build lovely homes in great settings.

The same care and attention is given to all the new homes across our stunning range. So whether you are taking your first steps onto the housing ladder, securing a home for your growing family, or looking to downsize we have a new home for you.

We are very proud to be building again in the beautiful market town of Market Rasen. Chantrey Park will turn into a thriving little community on the edge of this attractive town.

There are excellent local schools, community events and great sports facilities all within walking distance of Chantrey Park.

So relax they're Chestnut Homes!

We love building our new homes, and we hope you will love living in one.

MARKET RASEN





THE PERFECT BALANCE

OUR HOMES

We are delighted to present a collection of stunning new homes at Chantrey Park. Each house has been carefully designed, boasting traditional architecture and thoughtfully-planned internal layouts for modern living.

Community

With a wide range of activities and facilities for you to get involved in, whether that be through the schools, church or sporting events you'll feel part of the community in no time.

Environment

Along with existing trees and hedgerows we will be creating large areas of green open space, which will be linked by attractive swales. The swales not only look great and add to the rural character of the development, but are also a key part of the sustainable drainage system where rainwater is cleaned as it moves through the site – so water leaving Chantrey Park is cleaner than the rainwater falling on it – how cool is that!



GREAT...

Sleaford
34 miles

Scunthorpe
25 miles

Grimsby
21 miles

Lincoln
17 miles

LOCATION

Humberside Airport
16 miles

London
via rail from Lincoln Station
2 hours

Birmingham
via rail from Sleaford Station
2 hours 30 minutes

Whether you have to travel for business or pleasure, Market Rasen is very well connected. Lying on the A46, the town has easy access to many neighbouring cities.

Market Rasen is perfectly located with easy access to the cities of Lincoln, Hull and Grimsby. If you fancy a stroll along the beach, then the Lincolnshire coast is just 45 minutes away by car.

For journeys further afield, there are a number of airports within easy reach including Humberside Airport, Doncaster Sheffield Airport and Nottingham East Midlands.



LEARNING...

NURSERIES

Market Rasen Pre-School (0.8 miles)
Kilnwell Road, Market Rasen LN8 3BJ
Telephone: 01673 844 484
www.marketrasenpreschool.co.uk

Town & Country Kiddies Market Rasen (0.7 miles)
23 Kilnwell Road, Market Rasen LN8 3BJ
Telephone: 01673 844014
www.thedavangroup.com

Middle Rasen Nursery (1.6 miles)
Middle Rasen School Site, North Street, Middle Rasen LN8 3TS
Telephone: 01673 844111
www.mrnursery.btck.co.uk

SECONDARY SCHOOLS

De Aston School (1 mile)
Willingham Rd, Market Rasen LN8 3RF
Telephone: 01673 843415
www.de-aston.lincs.sch.uk

Caistor Grammar School (7.1 miles)
Church Street, Caistor, Lincolnshire, LN7 6QJ
Telephone: 01472 851250
www.caistorgrammar.com

William Farr C of E Comprehensive School (8.8 miles)
Lincoln Rd, Welton, Dunholme, Lincoln LN2 3JB
Telephone: 01673 866900
www.williamfarr.lincs.sch.uk

EDUCATION FOR ALL AGES

PRIMARY SCHOOLS

Market Rasen C of E Primary School (0.8 miles)
Mill Road, Market Rasen
Telephone: 01673 842395
www.marketrasen.lincs.sch.uk

Middle Rasen Primary School (1.6 miles)
North Street, Middle Rasen LN8 3TS
Telephone: 01673 843250
www.middle-rasen.lincs.sch.uk

Osgodby Primary School (3.2 miles)
Main Street, Osgodby, Market Rasen LN8 3TA
Telephone: 01673 828323
www.osgodbyschool.co.uk

FURTHER EDUCATION

Lincoln College (16 miles)
Monks Rd, Lincoln LN2 5HQ
Telephone: 01522 876000
www.lincolncollege.ac.uk

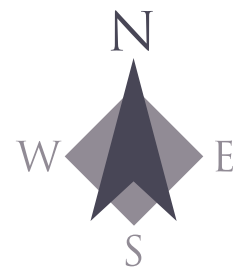
Bishop Grosseteste University (15 miles)
Longdales Road, Lincoln LN1 3DY
Telephone: 01522 527347
www.bishopg.ac.uk

University of Lincoln (19 miles)
Brayford Pool, Lincoln LN6 7TS
Telephone: 01522 882 000
www.lincoln.ac.uk

All distances are approximate

DISCOVER

House Type	Page	Plot numbers
2 Bedroom Homes		
 Buttermere	13	98, 99
 The Nook	14	27, 28, 29, 34, 35, 42, 43, 51, 52, 53, 65, 66, 84, 85, 88, 89
3 Bedroom Homes		
 Franklin	15	80, 81, 96, 97
 The Avebury	16	5, 55, 62
 The Cleveland	17	56
 The Sefton	18	24, 25, 75, 76
 The Ledbury	19	9, 58, 86
 The Lumbley	20	67
 The Lodge	21	50, 82, 90
 The Henley	24	4, 17, 63, 64, 69, 77, 95
 The Mulberry	25	3, 12a, 16, 44, 46, 78, 101
 Millbrook House	26	8
 Highfield House	27	26, 36, 45, 49, 74, 87
 The Rest	28	10, 11, 59, 61, 68, 71, 83
4 Bedroom Homes		
 The Birchwood	29	54
 The Elders	30	2, 18, 23, 100
 Orchard House	31	1, 6, 12, 14, 41, 72, 79
 The Pheasantry	32	15, 22, 60
 The Bressingham	33	19, 21, 57
 Arundel House	34	7, 20, 70
5 Bedroom Homes		
 Milton House	35	73
 Affordable Homes		
 Show Homes		
 First Homes		





YOUR NEW HOME

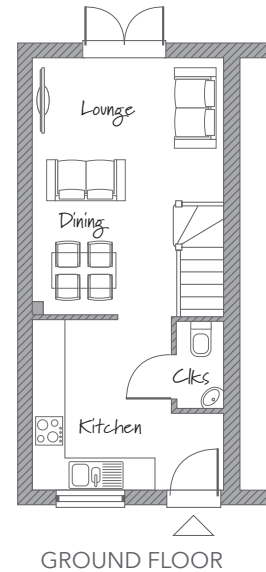


The Buttermere

PREMIUM RANGE

A lovely open plan 2 bedroom home, your perfect starter home!

Plots 98, 99

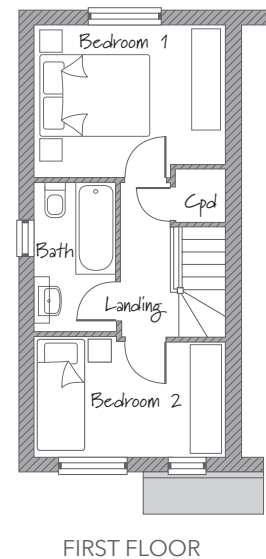


GROUND FLOOR

Lounge	4.739m (max) x 3.535m	15'6" (max) x 11'7"
Kitchen	3.535m (max) x 3.160m (max)	11'7" (max) x 10'4" (max)
Cloakroom	1.600m x 0.873m	5'2" x 2'10"

FIRST FLOOR

Bedroom 1	3.535m x 2.821m (max)	11'7" x 9'3" (max)
Bedroom 2	3.535m x 2.237m (max)	11'7" x 7'4" (max)
Bathroom	2.748m x 1.525m	9'0" x 5'0"



13

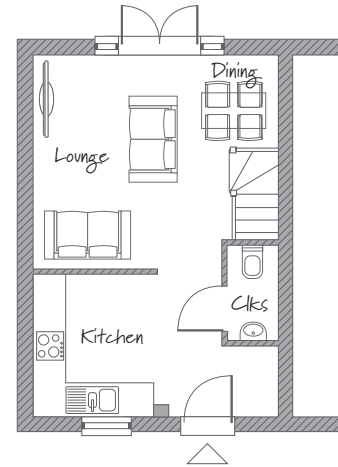
Please note, floorplans and dimensions are taken from architectural drawings and are for guidance only. Dimensions stated are within a tolerance of plus or minus 50mm. Overall dimensions are usually stated and there may be projections into these. Computer generated images not to scale. Finishes and materials may vary from those shown and landscaping is illustrative only.

The Nook

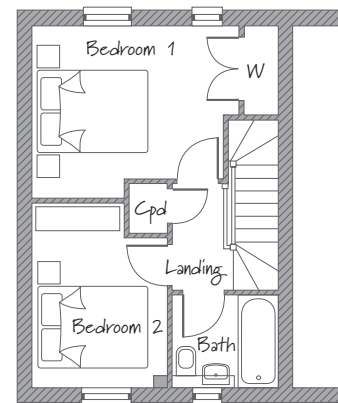
PREMIUM RANGE 

A charming 2 bedroom home for your first step on the housing ladder.

Plots 27, 28, 29, 34, 35, 42, 43, 51, 52, 53, 65, 66, 84, 85, 88, 89



GROUND FLOOR



FIRST FLOOR

FIRST FLOOR

14

GROUND FLOOR

Kitchen	2.630m x 4.491m (max)	8'7" x 14'8" (max)
Lounge/Dining	4.491m (max) x 3.919m (max)	14'8" (max) x 12'10" (max)
Cloakroom	0.950m x 1.800m	3'1" x 5'10"

FIRST FLOOR

Bedroom 1	3.748m (max) x 3.153m (max)	12'3" (max) x 10'4" (max)
Bedroom 2	3.397m (max) x 2.438m (max)	11'1" (max) x 7'11" (max)
Bathroom	1.979m x 1.700m	6'5" x 5'6"

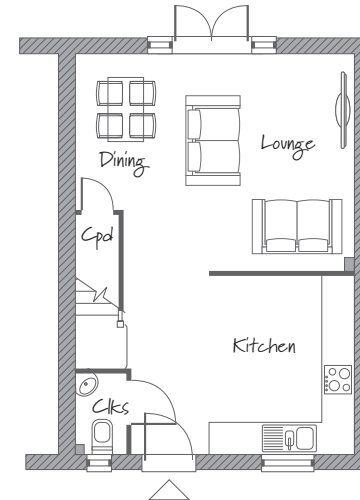
Please note, floorplans and dimensions are taken from architectural drawings and are for guidance only. Dimensions stated are within a tolerance of plus or minus 50mm. Overall dimensions are usually stated and there may be projections into these. Computer generated images not to scale. Finishes and materials may vary from those shown and landscaping is illustrative only.

The Franklin

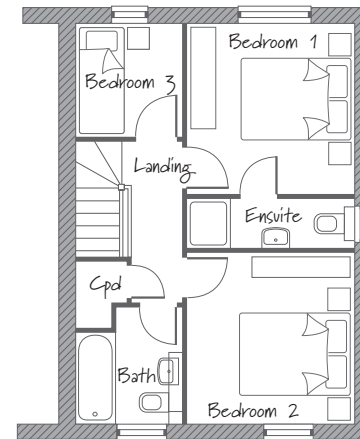
PREMIUM RANGE 

A superb 3 bedroom semi-detached home with ensuite to master bedroom, a great first family home!

Plots 80, 81, 96, 97



GROUND FLOOR



FIRST FLOOR

GROUND FLOOR

Lounge/Dining	5.166m (max) x 4.037m	16'11" (max) x 13'3"
Kitchen	4.128m x 3.300m	13'7" x 10'10"
Cloakroom	1.495m x 0.945m	4'11" x 3'1"

FIRST FLOOR

Bedroom 1	3.172m x 3.092m	10'5" x 10'1"
Ensuite	3.092m x 0.900m	10'1" x 2'11"
Bedroom 2	3.092m x 3.172m	10'1" x 10'4"
Bedroom 3	2.110m x 1.981m	6'11" x 6'6"
Bathroom	2.162m (max) x 1.981m (max)	7'1" (max) x 6'6" (max)

15

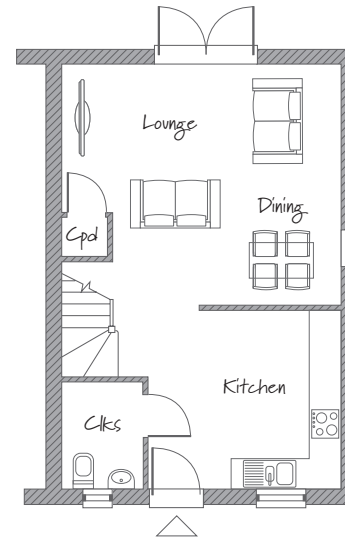
Please note, floorplans and dimensions are taken from architectural drawings and are for guidance only. Dimensions stated are within a tolerance of plus or minus 50mm. Overall dimensions are usually stated and there may be projections into these. Computer generated images not to scale. Finishes and materials may vary from those shown and landscaping is illustrative only.

The Avebury

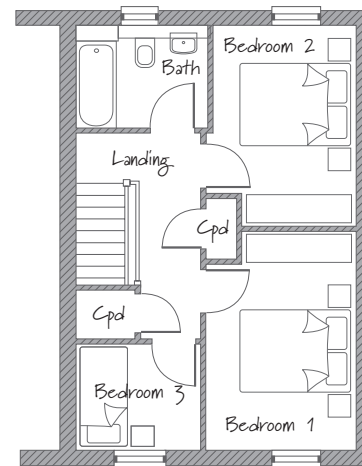
PREMIUM RANGE

A superb 3 bedroom semi-detached home.

Plots 5, 55, 62



GROUND FLOOR



FIRST FLOOR

16

GROUND FLOOR

Lounge/Dining	5.222m x 4.757m	17'1" x 15'7"
Kitchen	3.610m x 3.480 m	11'10" x 11'5"
Cloakroom	2.064m x 1.501m	6'9" x 4'11"

FIRST FLOOR

Bedroom 1	4.309m x 2.804m	14'1" x 9'2"
Bedroom 2	3.928m x 2.704m	12'10" x 8'10"
Bedroom 3	2.326m x 2.100m	7'7" x 6'10"
Bathroom	2.408m x 1.986m	7'10" x 6'6"

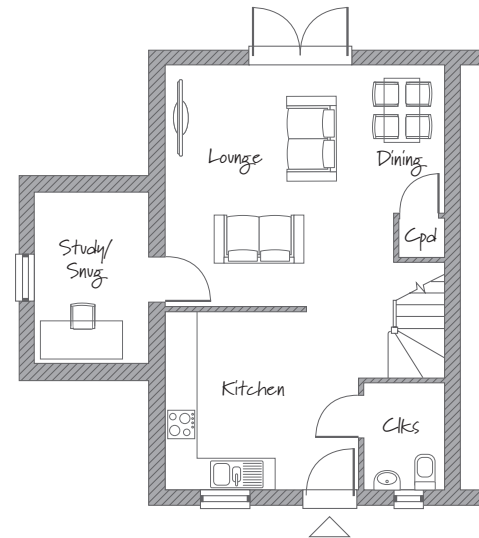
Please note, floorplans and dimensions are taken from architectural drawings and are for guidance only. Dimensions stated are within a tolerance of plus or minus 50mm. Overall dimensions are usually stated and there may be projections into these. Computer generated images not to scale. Finishes and materials may vary from those shown and landscaping is illustrative only.

The Cleveland

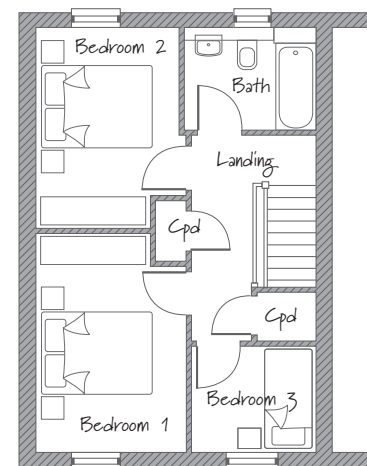
An elegant 3 bedroom home with an open plan lounge/diner and the addition of a practical snug.

Plot 56

PREMIUM RANGE



GROUND FLOOR



FIRST FLOOR

GROUND FLOOR

Lounge/Dining	5.222m x 4.757m	17'1" x 15'7"
Kitchen	3.610m x 3.480 m	11'10" x 11'5"
Study/Snug	3.380m x 2.115m	11'1" x 6'11"
Cloakroom	2.064m x 1.501m	6'9" x 4'11"

FIRST FLOOR

Bedroom 1	4.309m x 2.804m	14'1" x 9'2"
Bedroom 2	3.928m x 2.704m	12'10" x 8'10"
Bedroom 3	2.326m x 2.100m	7'7" x 6'10"
Bathroom	2.408m x 1.986m	7'10" x 6'6"

17

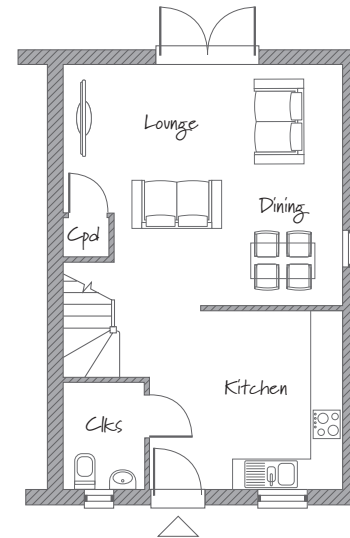
Please note, floorplans and dimensions are taken from architectural drawings and are for guidance only. Dimensions stated are within a tolerance of plus or minus 50mm. Overall dimensions are usually stated and there may be projections into these. Computer generated images not to scale. Finishes and materials may vary from those shown and landscaping is illustrative only.

The Sefton

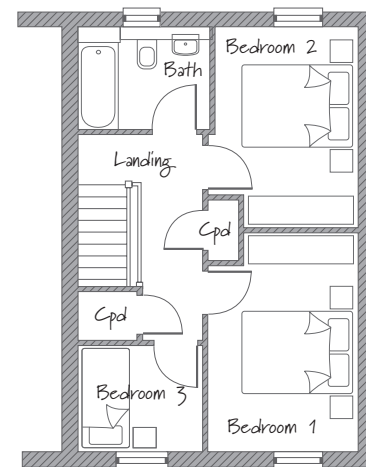
PREMIUM RANGE

An ideal home for growing families. The heart of the home is the open plan kitchen leading to the spacious lounge.

Plots 24, 25, 75, 76



GROUND FLOOR



FIRST FLOOR

18

GROUND FLOOR

Lounge/Dining	5.222m x 4.757m	17'1" x 15'7"
Kitchen	3.610m x 3.480 m	11'10" x 11'5"
Cloakroom	2.064m x 1.501m	6'9" x 4'11"

FIRST FLOOR

Bedroom 1	4.309m x 2.804m	14'1" x 9'2"
Bedroom 2	3.928m x 2.704m	12'10" x 8'10"
Bedroom 3	2.326m x 2.100m	7'7" x 6'10"
Bathroom	2.408m x 1.986m	7'10" x 6'6"

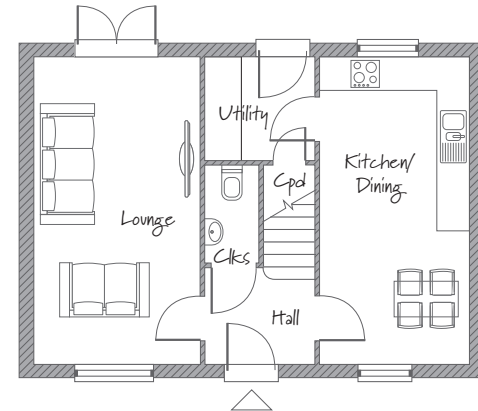
Please note, floorplans and dimensions are taken from architectural drawings and are for guidance only. Dimensions stated are within a tolerance of plus or minus 50mm. Overall dimensions are usually stated and there may be projections into these. Computer generated images not to scale. Finishes and materials may vary from those shown and landscaping is illustrative only.

The Ledbury

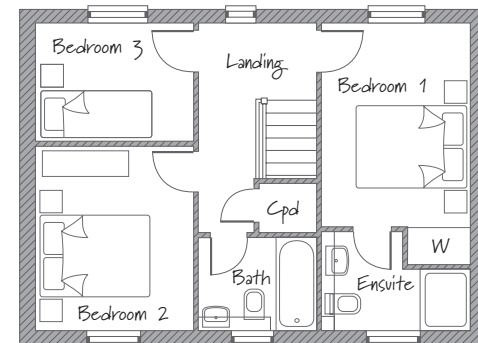
PREMIUM RANGE 

An elegant 3 bedroom home with a really useful utility room and French doors from the lounge offering a real link to the garden.

Plots 9, 58, 86



GROUND FLOOR



FIRST FLOOR

GROUND FLOOR

Lounge	5.630m x 3.000m	18'5" x 9'10"
Kitchen/Dining	5.630m x 2.730m	18'5" x 8'11"
Utility	2.010m x 1.882m	6'7" x 6'2"
Cloakroom	1.808m x 0.968m	5'11" x 3'2"

FIRST FLOOR

Bedroom 1	3.754m x 2.730m	12'3" x 8'11"
Ensuite	2.730m (max) x 1.783m (max)	8'11" (max) x 5'10" (max)
Bedroom 2	3.384m x 2.900m	11'1" x 9'6"
Bedroom 3	2.900m x 2.153m	9'6" x 7'0"
Bathroom	2.177m (max) x 1.700m	7'1" (max) x 5'7"

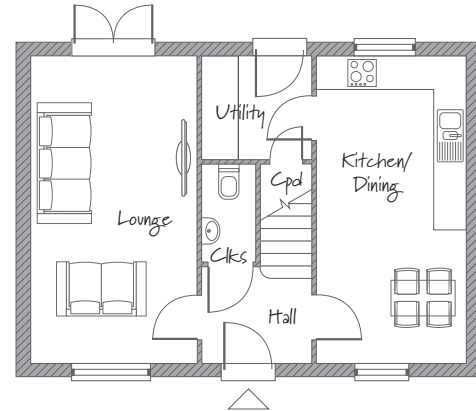
Please note, floorplans and dimensions are taken from architectural drawings and are for guidance only. Dimensions stated are within a tolerance of plus or minus 50mm. Overall dimensions are usually stated and there may be projections into these. Computer generated images not to scale. Finishes and materials may vary from those shown and landscaping is illustrative only.

The Lumbley

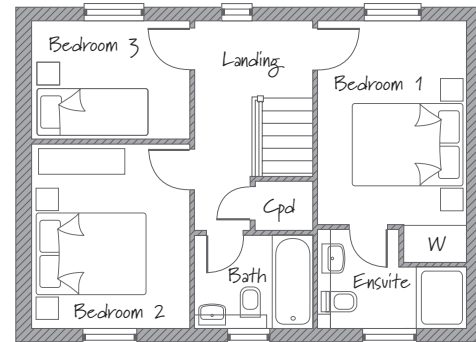
PREMIUM RANGE

A stylish 3 bedroom detached home perfect for the growing family, the Lumbley offers space and style.

Plot 67



GROUND FLOOR



FIRST FLOOR

20

GROUND FLOOR

Lounge	5.630m x 3.000m	18'5" x 9'10"
Kitchen/Dining	5.630m x 2.730m	18'5" x 8'11"
Utility	2.010m x 1.882m	6'7" x 6'2"
Cloakroom	1.808m x 0.968m	5'11" x 3'2"

FIRST FLOOR

Bedroom 1	3.754m x 2.730m	12'3" x 8'11"
Ensuite	2.730m (max) x 1.783m (max)	8'11" (max) x 5'10" (max)
Bedroom 2	3.384m x 2.900m	11'1" x 9'6"
Bedroom 3	2.900m x 2.153m	9'6" x 7'0"
Bathroom	2.177m (max) x 1.700m	7'1" (max) x 5'7"

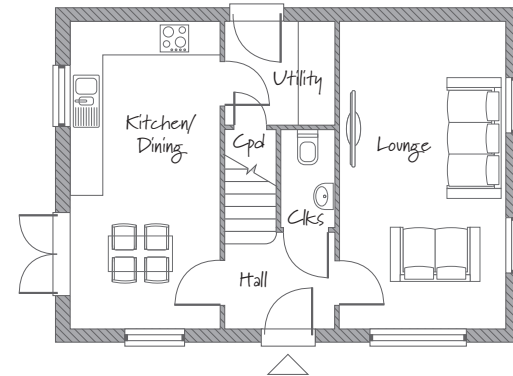
Please note, floorplans and dimensions are taken from architectural drawings and are for guidance only. Dimensions stated are within a tolerance of plus or minus 50mm. Overall dimensions are usually stated and there may be projections into these. Computer generated images not to scale. Finishes and materials may vary from those shown and landscaping is illustrative only.

The Lodge

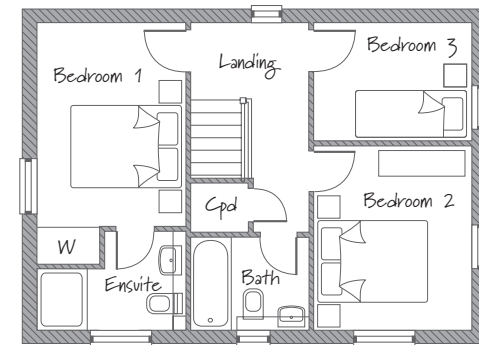
PREMIUM RANGE 

A stunning 3 bedroom detached home with a great utility room and ensuite to master bedroom with a large shower enclosure.

Plots 50, 82, 90



GROUND FLOOR



FIRST FLOOR

GROUND FLOOR

Lounge	5.630m x 3.000m	18'5" x 9'10"
Kitchen/Dining	5.630m x 2.730m	18'5" x 8'11"
Utility	2.010m x 1.882m	6'7" x 6'2"
Cloakroom	1.808m x 0.968m	5'11" x 3'2"

FIRST FLOOR

Bedroom 1	3.754m x 2.730m	12'3" x 8'11"
Ensuite	2.730m (max) x 1.783m (max)	8'11" (max) x 5'10" (max)
Bedroom 2	3.384m x 2.900m	11'1" x 9'6"
Bedroom 3	2.900m x 2.153m	9'6" x 7'0"
Bathroom	2.177m (max) x 1.700m	7'1" (max) x 5'7"

21

Please note, floorplans and dimensions are taken from architectural drawings and are for guidance only. Dimensions stated are within a tolerance of plus or minus 50mm. Overall dimensions are usually stated and there may be projections into these. Computer generated images not to scale. Finishes and materials may vary from those shown and landscaping is illustrative only.



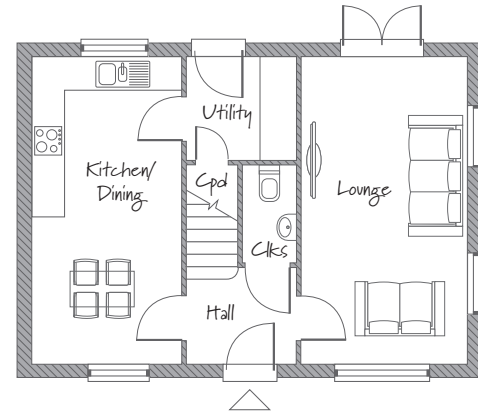


The Henley

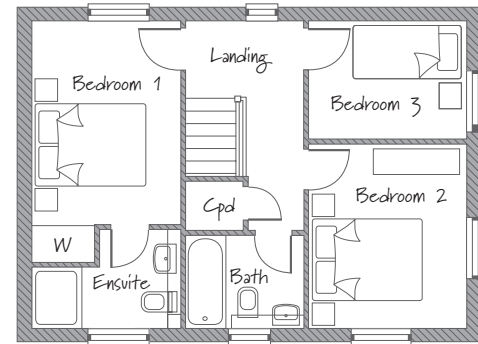
PREMIUM RANGE

A pretty 3 bedroom detached home with dual aspect lounge. The utility rooms helps keep the kitchen clutter free.

Plots 4, 17, 63, 64, 69, 77, 95



GROUND FLOOR



FIRST FLOOR

24

GROUND FLOOR

Lounge	5.630m x 3.000m	18'5" x 9'10"
Kitchen/Dining	5.630m x 2.730m	18'5" x 8'11"
Utility	2.010m x 1.882m	6'7" x 6'2"
Cloakroom	1.808m x 0.968m	5'11" x 3'2"

FIRST FLOOR

Bedroom 1	3.754m x 2.730m	12'3" x 8'11"
Ensuite	2.730m (max) x 1.783m (max)	8'11" (max) x 5'10" (max)
Bedroom 2	3.384m x 2.900m	11'1" x 9'6"
Bedroom 3	2.900m x 2.153m	9'6" x 7'0"
Bathroom	2.177m (max) x 1.700m	7'1" (max) x 5'7"

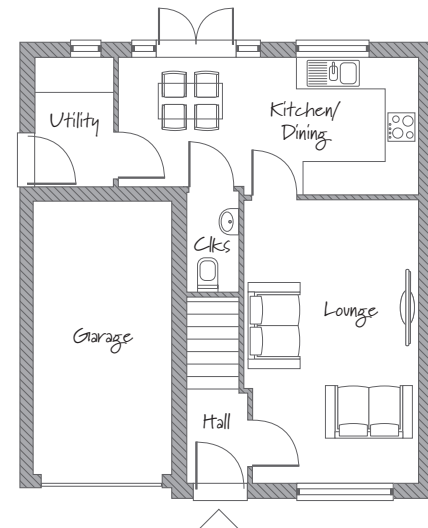
Please note, floorplans and dimensions are taken from architectural drawings and are for guidance only. Dimensions stated are within a tolerance of plus or minus 50mm. Overall dimensions are usually stated and there may be projections into these. Computer generated images not to scale. Finishes and materials may vary from those shown and landscaping is illustrative only.

The Mulberry

A very popular 3 bedroom detached home offering space for all the family.

Plots 3, 12a, 16, 44, 46, 78, 101

PREMIUM PLUS RANGE



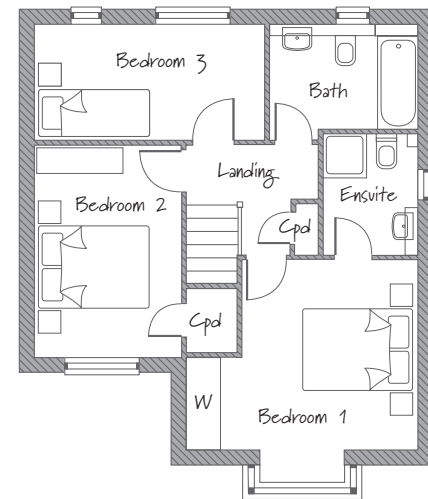
GROUND FLOOR

GROUND FLOOR

Lounge	5.180m x 3.197m (max)	16'11" x 10'5" (max)
Kitchen/Dining	5.417m (max) x 2.540m (max)	17'9" (max) x 8'4" (max)
Utility	2.390m x 1.582m	7'10" x 5'2"
Cloakroom	1.789m x 0.900m	5'10" x 2'11"

FIRST FLOOR

Bedroom 1	4.280m (max) x 3.486m (max)	14'0" (max) x 11'5" (max)
Ensuite	2.255m x 1.753m	7'4" x 5'9"
Bedroom 2	3.921m x 2.722m	12'10" x 8'11"
Bedroom 3	4.278m x 2.151m	14'0" x 7'0"
Bathroom	2.722m (max) x 1.953m	8'11" (max) x 6'4"



FIRST FLOOR

25

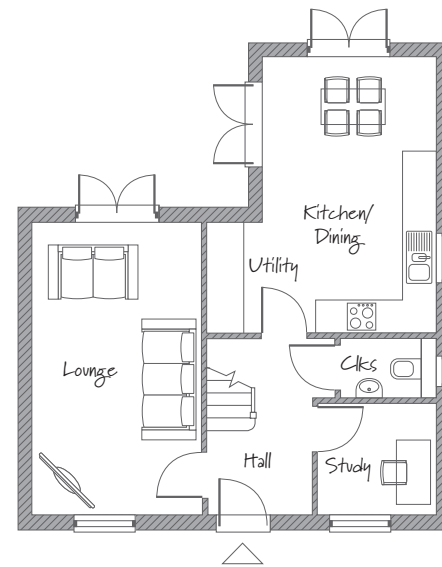
Please note, floorplans and dimensions are taken from architectural drawings and are for guidance only. Dimensions stated are within a tolerance of plus or minus 50mm. Overall dimensions are usually stated and there may be projections into these. Computer generated images not to scale. Finishes and materials may vary from those shown and landscaping is illustrative only.

Millbrook House

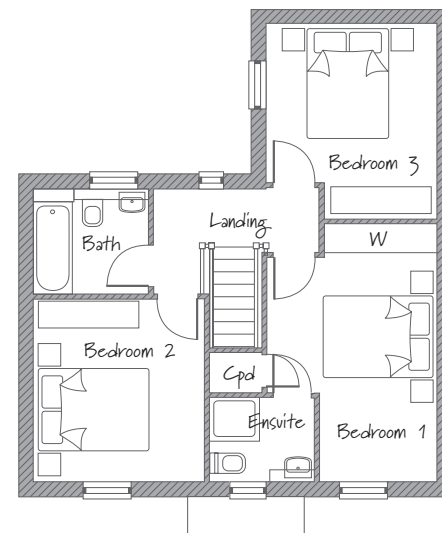
A perfect home for the growing family with great space for entertaining.

Plot 8

PREMIUM PLUS RANGE



GROUND FLOOR



FIRST FLOOR

26

GROUND FLOOR

Kitchen/Dining	5.098m (max) x 4.202m (max)	16'9" (max) x 13'9" (max)
Lounge	5.405m x 3.068m	18'8" x 10'0"
Study	2.175m x 2.109m	7'1" x 6'11"
Cloakroom	1.780m x 1.050m	5'10" x 3'5"

FIRST FLOOR

Bedroom 1	4.770m (max) x 3.137m (max)	15'7" (max) x 10'3" (max)
Ensuite	1.925m x 1.548m	6'3" x 5'0"
Bedroom 2	3.373m x 3.147m	11'0" x 10'3"
Bedroom 3	3.579m (max) x 3.155m (max)	11'8" (max) x 10'4" (max)
Bathroom	2.090m x 1.938m	6'10" x 6'4"

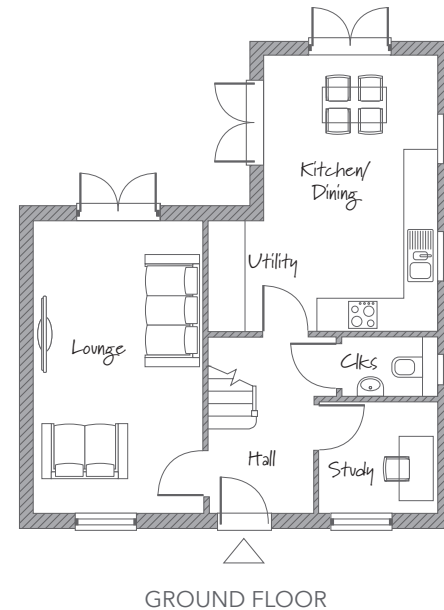
Please note, floorplans and dimensions are taken from architectural drawings and are for guidance only. Dimensions stated are within a tolerance of plus or minus 50mm. Overall dimensions are usually stated and there may be projections into these. Computer generated images not to scale. Finishes and materials may vary from those shown and landscaping is illustrative only.

Highfield House

PREMIUM PLUS RANGE

A fantastic 3 bedroom detached family home with a large open plan kitchen diner and a separate study.

Plots 26, 36, 45, 49, 74, 87

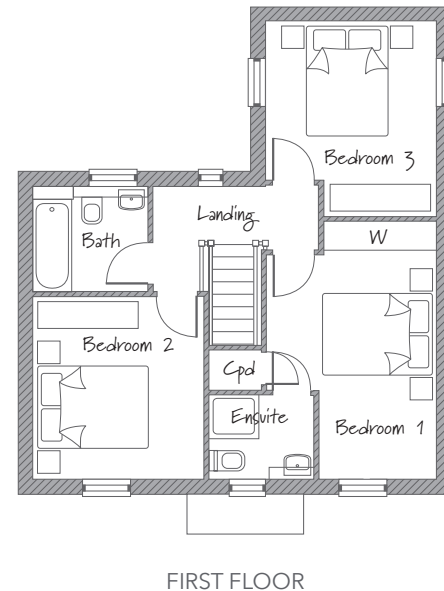


GROUND FLOOR

Kitchen/Dining	5.098m (max) x 4.202m (max)	16'9" (max) x 13'9" (max)
Lounge	5.405m x 3.068m	18'8" x 10'0"
Study	2.175m x 2.109m	7'1" x 6'11"
Cloakroom	1.780m x 1.050m	5'10" x 3'5"

FIRST FLOOR

Bedroom 1	4.770m (max) x 3.137m (max)	15'7" (max) x 10'3" (max)
Ensuite	1.925m x 1.548m	6'3" x 5'0"
Bedroom 2	3.373m x 3.147m	11'0" x 10'3"
Bedroom 3	3.579m (max) x 3.155m (max)	11'8" (max) x 10'4" (max)
Bathroom	2.090m x 1.938m	6'10" x 6'4"



27

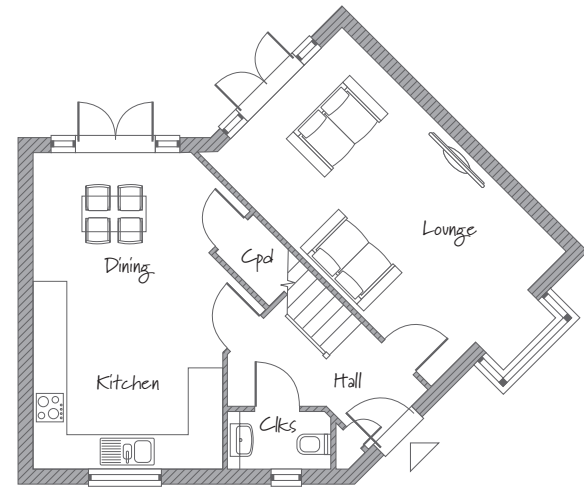
Please note, floorplans and dimensions are taken from architectural drawings and are for guidance only. Dimensions stated are within a tolerance of plus or minus 50mm. Overall dimensions are usually stated and there may be projections into these. Computer generated images not to scale. Finishes and materials may vary from those shown and landscaping is illustrative only.

The Rest

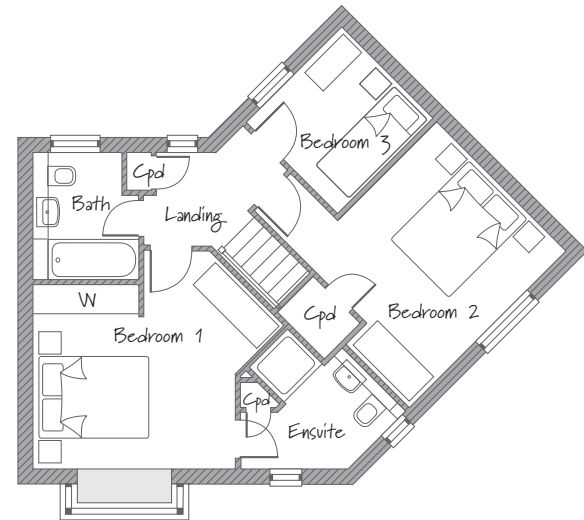
PREMIUM PLUS RANGE

A 3 bedroom corner home with attractive bay window to both the lounge and master bedroom and the two sets of French doors offer a great link to the rear garden.

Plots 10, 11, 59, 61, 68, 71, 83



GROUND FLOOR



FIRST FLOOR

28

GROUND FLOOR

Lounge	6.640m inc. bay x 3.500m (max)	21'9" inc. bay x 11'5" (max)
Kitchen/Dining	5.856m x 3.193m (min)	19'2" x 10'5" (min)
Cloakroom	1.900m (max) x 1.045m (max)	6'2" (max) x 3'5" (max)

FIRST FLOOR

Bedroom 1	3.754m (min) x 3.413m (min)	12'3" (min) x 11'2" (min)
Ensuite	2.905m (max) x 2.615m (max)	9'6" (max) x 8'7" (max)
Bedroom 2	4.109m (max) x 3.362m (min)	13'5" (max) x 11'0" (min)
Bedroom 3	2.500m x 2.400m	8'2" x 7'10"
Bathroom	2.350m (max) x 1.950m (max)	7'8" (max) x 6'4" (max)

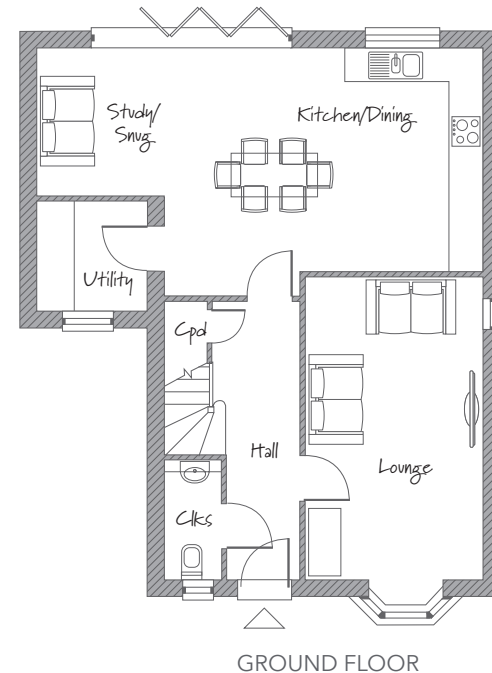
Please note, floorplans and dimensions are taken from architectural drawings and are for guidance only. Dimensions stated are within a tolerance of plus or minus 50mm. Overall dimensions are usually stated and there may be projections into these. Computer generated images not to scale. Finishes and materials may vary from those shown and landscaping is illustrative only.

The Birchwood

PREMIUM PLUS RANGE

A fantastic 4 bedroom detached house with a large open plan kitchen/diner and a practical study or snug.

Plot 54

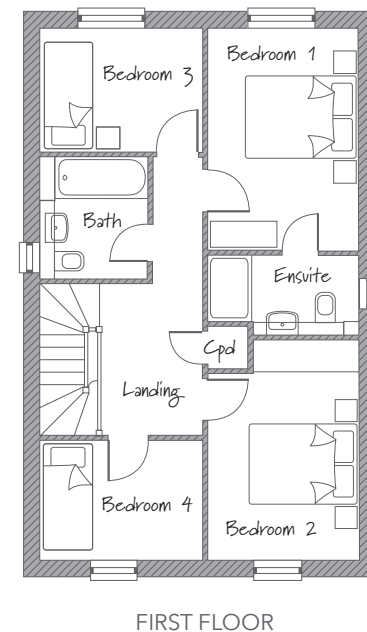


GROUND FLOOR

Lounge	5.550m x 3.250m	18'2" x 10'8"
Kitchen/Dining	5.855m (max) x 4.552m (max)	19'2" (max) x 14'11" (max)
Study/Snug	2.670m x 2.363m	8'9" x 7'9"
Utility	2.003m x 2.060m	6'6" x 6'9"
Cloakroom	2.200m (max) x 1.039m (max)	7'2" (max) x 3'4" (max)

FIRST FLOOR

Bedroom 1	3.400m x 2.769m	11'2" x 9'1"
Ensuite	2.769m x 1.450m (max)	9'1" x 4'9" (max)
Bedroom 2	4.047m (max) x 2.769m (max)	13'3" (max) x 9'1" (max)
Bedroom 3	2.993m x 2.278m	9'9" x 7'5"
Bedroom 4	2.993m x 2.200m	9'9" x 7'2"
Bathroom	2.230m (max) x 1.950m (max)	7'3" (max) x 6'4" (max)



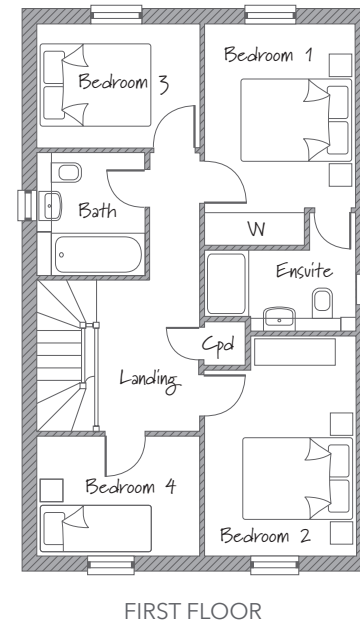
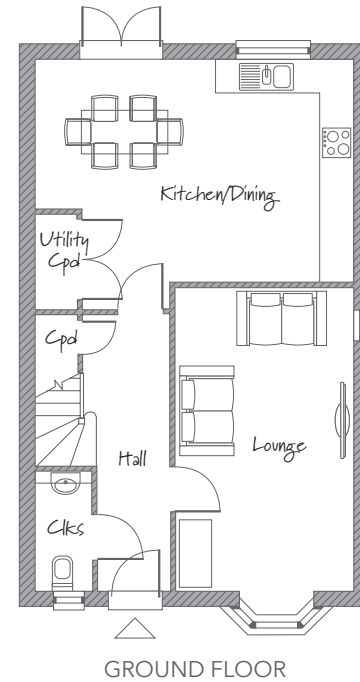
Please note, floorplans and dimensions are taken from architectural drawings and are for guidance only. Dimensions stated are within a tolerance of plus or minus 50mm. Overall dimensions are usually stated and there may be projections into these. Computer generated images not to scale. Finishes and materials may vary from those shown and landscaping is illustrative only.

The Elders

PREMIUM PLUS RANGE

A superb family home featuring a large kitchen/diner which is perfect for entertaining guests.

Plots 2, 18, 23, 100



30

GROUND FLOOR

Lounge	5.550m x 3.250m	18'2" x 10'8"
Kitchen/Dining	5.855m (max) x 4.552m (max)	19'2" (max) x 14'11" (max)
Cloakroom	2.200m (max) x 1.039m (max)	7'2" (max) x 3'4" (max)

FIRST FLOOR

Bedroom 1	3.400m x 2.769m	11'2" x 9'1"
Ensuite	2.769m x 1.450m (max)	9'1" x 4'9" (max)
Bedroom 2	4.047m (max) x 2.769m (max)	13'3" (max) x 9'1" (max)
Bedroom 3	2.993m x 2.278m	9'9" x 7'5"
Bedroom 4	2.993m x 2.200m	9'9" x 7'2"
Bathroom	2.230m (max) x 1.950m (max)	7'3" (max) x 6'4" (max)

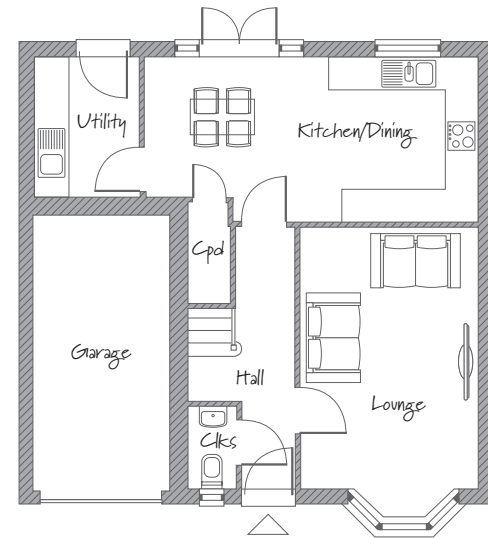
Please note, floorplans and dimensions are taken from architectural drawings and are for guidance only. Dimensions stated are within a tolerance of plus or minus 50mm. Overall dimensions are usually stated and there may be projections into these. Computer generated images not to scale. Finishes and materials may vary from those shown and landscaping is illustrative only.

Orchard House

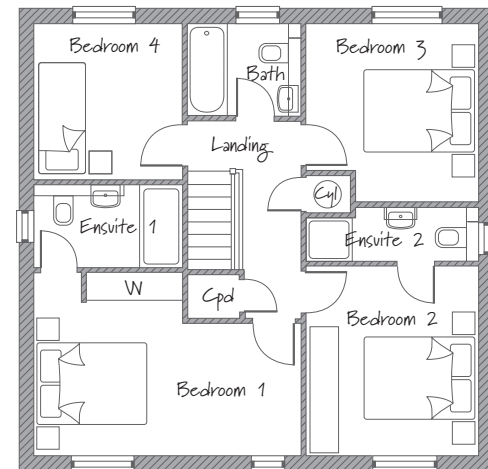
PREMIUM PLUS RANGE

A four bedroom family home with a large open plan kitchen/diner. With four bedrooms and two ensuites, there's plenty of room for all the family.

Plots 1, 6, 12, 14, 41, 72, 79



GROUND FLOOR



FIRST FLOOR

GROUND FLOOR

Lounge	5.336m inc. bay x 3.324m	17'6" inc. bay x 10'10"
Kitchen/Dining	6.170m (max) x 3.040m (max)	20'2" (max) x 9'11" (max)
Utility	2.593m x 1.955m	8'6" x 6'4"
Cloakroom	1.556m x 0.916m	5'1" x 3'0"

FIRST FLOOR

Bedroom 1	4.926m (max) x 3.462m (max)	16'1" (max) x 11'4" (max)
Ensuite 1	2.735m x 1.500m	8'11" x 4'11"
Bedroom 2	3.497m x 3.199m	11'5" x 10'6"
Ensuite 2	3.199m (max) x 1.000m (max)	10'5" (max) x 3'3" (max)
Bedroom 3	3.309m (max) x 3.199m (max)	10'10" (max) x 10'5" (max)
Bedroom 4	2.844m x 2.735m	9'3" x 8'11"
Bathroom	2.097m x 1.700m	6'10" x 5'6"



Plot 6

31

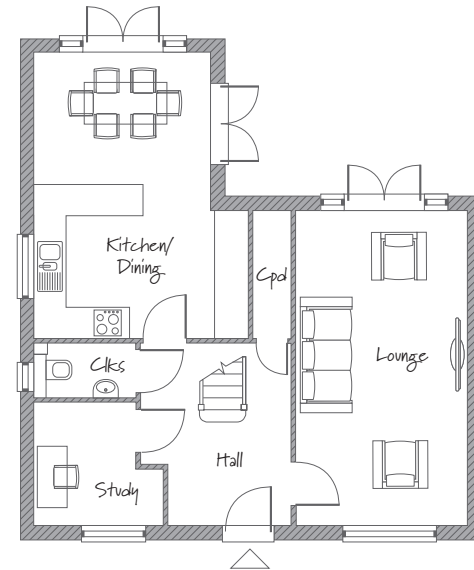
Please note, floorplans and dimensions are taken from architectural drawings and are for guidance only. Dimensions stated are within a tolerance of plus or minus 50mm. Overall dimensions are usually stated and there may be projections into these. Computer generated images not to scale. Finishes and materials may vary from those shown and landscaping is illustrative only.

The Pheasantry

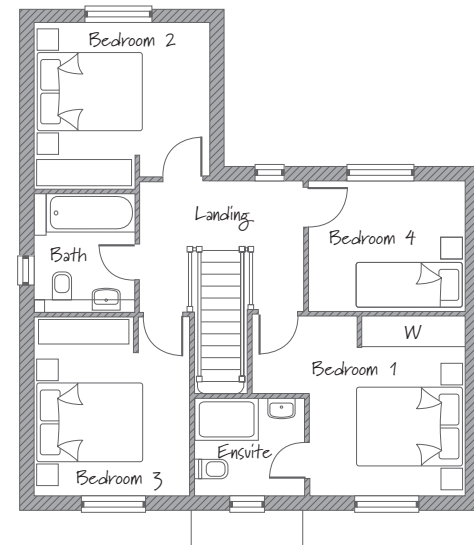
PREMIUM PLUS RANGE

A stylish and spacious 4 bedroom detached home with an open plan kitchen diner and a separate study... a great family home.

Plots 15, 22, 60



GROUND FLOOR



FIRST FLOOR

32

GROUND FLOOR

Lounge	6.080m x 3.255m	19'11" x 10'8"
Kitchen/Dining	5.572m x 3.380m	18'3" x 13'6"
Study	2.480m (max) x 2.321m	8'1" (max) x 7'7"
Cloakroom	1.950m x 1.031m	6'4" x 3'4"

FIRST FLOOR

Bedroom 1	3.468m (max) x 3.011m	11'4" (max) x 9'10"
Ensuite	2.108m x 1.900m	6'10" x 6'2"
Bedroom 2	3.380m x 3.171m (max)	11'1" x 10'4" (max)
Bedroom 3	3.459m x 3.011m	11'4" (max) x 9'10" (max)
Bedroom 4	3.036m x 2.519m	9'11" (max) x 8'3" (max)
Bathroom	2.282m x 1.947m	7'5" (max) x 6'4" (max)

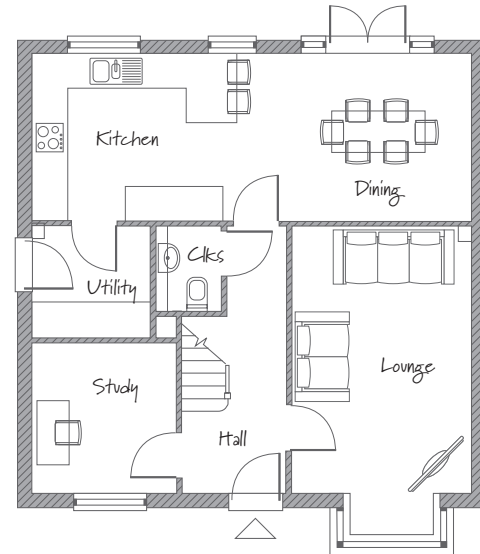
Please note, floorplans and dimensions are taken from architectural drawings and are for guidance only. Dimensions stated are within a tolerance of plus or minus 50mm. Overall dimensions are usually stated and there may be projections into these. Computer generated images not to scale. Finishes and materials may vary from those shown and landscaping is illustrative only.

The Bressingham

PLATINUM RANGE

A fantastic 4 bedroom detached family home with a large open plan kitchen diner, separate study, two ensuite and a single garage - room for everyone (and the car!)

Plots 19, 21, 57



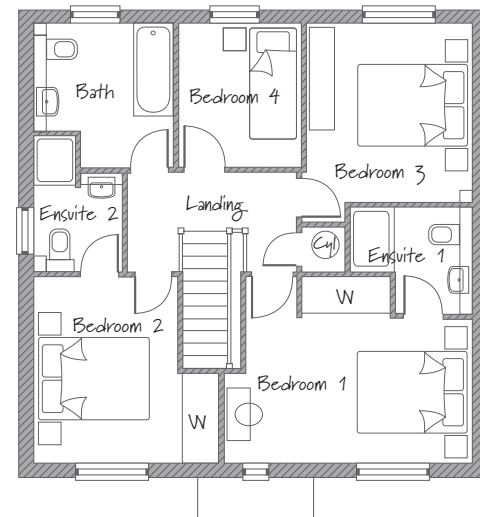
GROUND FLOOR

GROUND FLOOR

Kitchen/Dining	8.105m x 3.030m	26'7" x 9'11"
Lounge	5.703m inc. bay x 3.275m	18'8" inc. bay x 10'8"
Utility	2.182m x 2.030m	7'1" x 6'7"
Study	2.792m x 2.715m	9'1" x 8'10"
Cloakroom	1.548m x 1.292m	5'0" x 4'2"

FIRST FLOOR

Bedroom 1	4.598m (max) x 3.429m (max)	15'1" (max) x 11'3" (max)
Ensuite 1	2.246m (max) x 1.951m (max)	7'4" (max) x 6'4" (max)
Bedroom 2	3.455m (max) x 3.414m (max)	11'4" (max) x 11'2" (max)
Ensuite 2	2.496m (max) x 1.640m (max)	8'2" (max) x 5'4" (max)
Bedroom 3	3.290m (max) x 3.069m (max)	10'9" (max) x 10'0" (max)
Bedroom 4	2.638m (max) x 2.275m (max)	8'7" (max) x 7'5" (max)
Bathroom	2.638m (max) x 2.575m (max)	8'7" (max) x 8'5" (max)



FIRST FLOOR

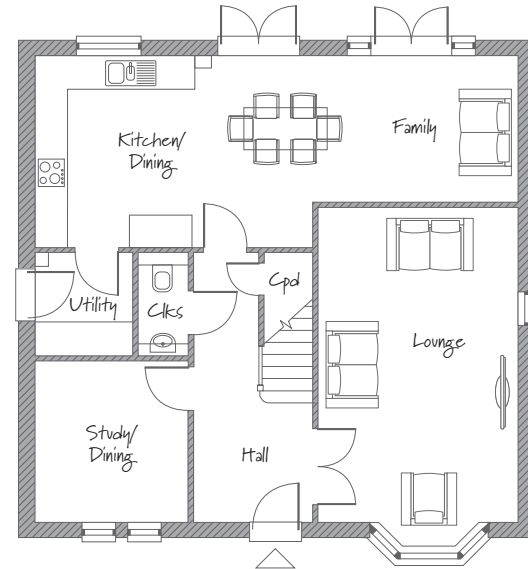
Please note, floorplans and dimensions are taken from architectural drawings and are for guidance only. Dimensions stated are within a tolerance of plus or minus 50mm. Overall dimensions are usually stated and there may be projections into these. Computer generated images not to scale. Finishes and materials may vary from those shown and landscaping is illustrative only.

Arundel House

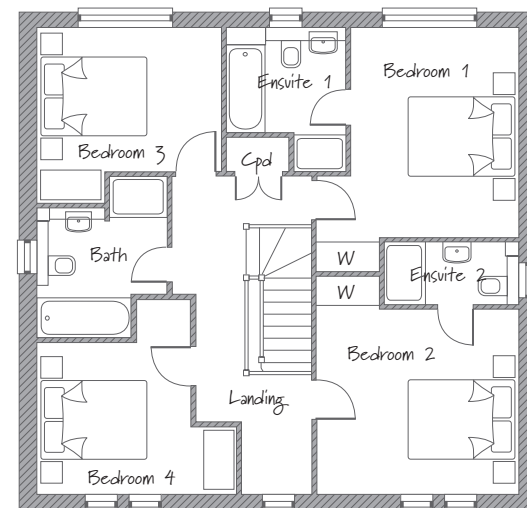
PLATINUM RANGE

A beautiful detached home with 4 double bedrooms and two ensuites...
modern family living at its best!

Plots 7, 20, 70



GROUND FLOOR



FIRST FLOOR

34

GROUND FLOOR

Lounge	6.477m inc. bay x 3.800m	21'3" inc. bay x 12'5"
Kitchen/Dining/Family	9.230m (max) x 3.630 (max)	30'3" (max) x 11'10" (max)
Study/Dining	3.071m x 2.898m	10'0" x 9'6"
Utility	1.930m x 1.860m	6'4" x 6'1"
Cloakroom	1.930m x 0.939m	6'4" x 3'0"

FIRST FLOOR

Bedroom 1	4.643m (max) x 3.867m (max)	15'2" (max) x 12'8" (max)
Ensuite 1	2.730m (max) x 2.291m (max)	8'11" (max) x 7'6" (max)
Bedroom 2	4.157m (max) x 3.858m	13'7" (max) x 12'7"
Ensuite 2	2.575m x 1.200m	8'5" x 3'11"
Bedroom 3	3.541m x 3.336m (max)	11'7" x 10'11" (max)
Bedroom 4	3.851m (max) x 3.720m (max)	12'7" (max) x 12'2" (max)
Bathroom	3.088 (max) x 2.488m (max)	10'1" (max) x 8'1" (max)

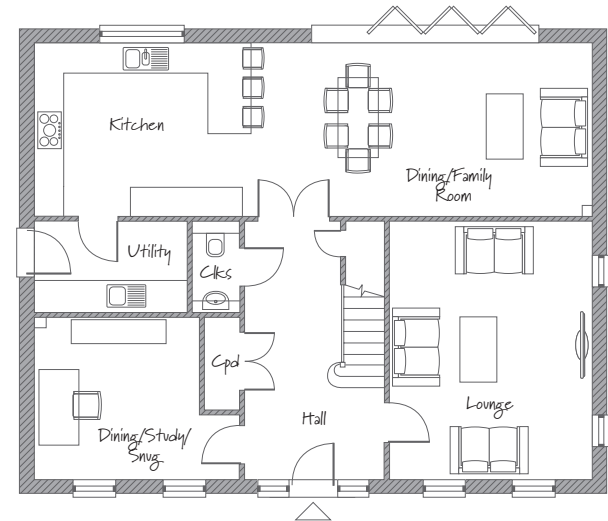
Please note, floorplans and dimensions are taken from architectural drawings and are for guidance only. Dimensions stated are within a tolerance of plus or minus 50mm. Overall dimensions are usually stated and there may be projections into these. Computer generated images not to scale. Finishes and materials may vary from those shown and landscaping is illustrative only.

Milton House

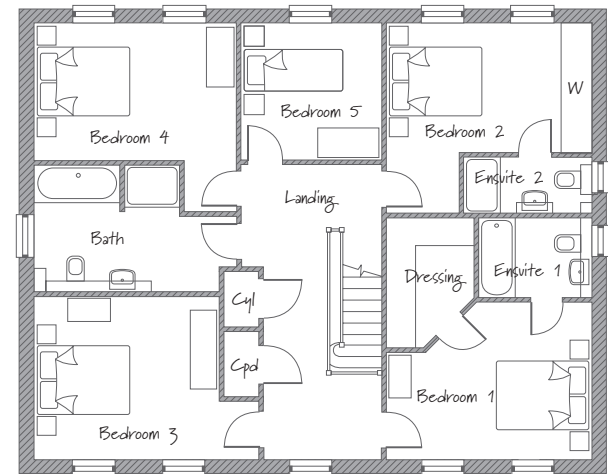
PLATINUM RANGE

An executive family home with an impressive kitchen diner, separate utility, a formal dining room and a study - complete with double garage.

Plot 73



GROUND FLOOR



FIRST FLOOR

GROUND FLOOR

Lounge	5.637m x 4.290m	18'5" x 14'0"
Kitchen/Breakfast	7.368m x 3.930m	24'2" x 12'10"
Dining	4.290m x 3.500m	14'0" x 11'5"
Study	3.628m x 3.462m	11'10" x 11'4"
Utility	2.496m x 1.855m	8'2" x 6'1"
Cloakroom	1.855m x 1.039m	6'1" x 3'4"

FIRST FLOOR

Bedroom 1	4.020m x 3.153m (min)	13'2" x 10'4" (min)
Dressing Area	2.932m x 1.700m	9'7" x 5'6"
Ensuite 1	3.564m x 2.288m	13'8" x 7'6"
Bedroom 2	4.357m x 2.531m (min)	14'3" x 8'3" (min)
Ensuite 2	3.064m x 1.200m	10'0" x 3'11"
Bedroom 3	4.186m x 3.369m	13'8" x 11'0"
Bedroom 4	3.695m x 3.164m	12'1" x 10'4"
Bedroom 5	4.020m x 2.500m	13'2" x 8'2"
Bathroom	3.093m x 2.511m	10'1" x 8'2"

Please note, floorplans and dimensions are taken from architectural drawings and are for guidance only. Dimensions stated are within a tolerance of plus or minus 50mm. Overall dimensions are usually stated and there may be projections into these. Computer generated images not to scale. Finishes and materials may vary from those shown and landscaping is illustrative only.





SHINY





BEAUTIFULLY DESIGNED

We have used all our years of experience to create your new home at Chantrey Park.

Our designers are pretty obsessed with detail, and it shows in every new home that we build. We like creating stunning kitchens where you will not only love to cook, but also socialise by taking advantage of the great open plan layouts.

We also love adding lots of beautiful fitted bathroom furniture to hide away any clutter, leaving sleek clean bathrooms, ensuites and cloakrooms that will be the envy of your friends.

Our friendly staff are on hand to help you choose the finishes that will complete your dream home (in fact it's probably the favourite part of their job!).

Whether you prefer country classic styling or the contemporary look, we have the designs to suit your individual taste, and our range of contemporary square edge worktops complete the look – giving you your dream kitchen.

What others call “extras” – we love fitting as standard.

We offer three levels of specification based on the floor area of your new home:

PREMIUM RANGE 

PREMIUM PLUS RANGE 

PLATINUM RANGE 

The level of specification is shown on each brochure page, just below the house name.

A high-angle, close-up photograph of a shower stall. The central focus is a large, circular, chrome showerhead with numerous small nozzles. Below it, a handheld showerhead is visible, also with a chrome finish and a grid of nozzles. The shower is set against a wall of light-colored tiles with intricate, dark-colored geometric and floral patterns. The lighting is soft and even, highlighting the metallic surfaces and the textures of the tiles. The word "SUBSTANCE" is overlaid in a white, outlined, sans-serif font across the middle of the image.

SUBSTANCE



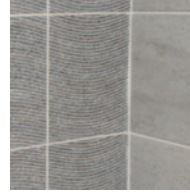
KITCHENS

The kitchen is at the heart of the home, so we take special care to make sure it works as good as it looks. Choose from contemporary or traditional styled cabinet doors, all featuring the latest square edge worktops. Sleek stainless steel built-in appliances complete your beautiful kitchen.



BATHROOMS

We spend lots of time perfecting our bathrooms so you can enjoy that long soak in the sleek white Pura bath which you will find snuggled perfectly next to the Roper Rhodes fitted bathroom furniture. Showering is provided by thermostatic Aqualisa showers. So if a long soak in the bath is not your thing, hop in the shower for an invigorating blast, and then dry your towels on the shiny chrome towel rails that are fitted to many of our homes.



TILING

Porcelanosa wall tiles sourced from Spain complete our bathrooms, ensuites and cloakrooms. We have a stunning range to choose from, so whether you are looking for crisp white or a bit of texture and colour we have the tiles to suit your taste. Some of our homes also have beautiful tiled floors, ask one of our staff for full details.



KEEPING YOU WARM

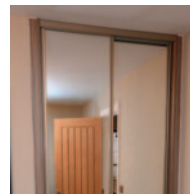
We fit really high levels of insulation in the loft, walls and floors of your lovely new home. This not only keeps you and your loved ones nice and cosy, but will also help to keep those fuel bills as low as possible.

QUALITY FIXTURES AND FITTINGS



SECURITY & SAFETY

Security comes first with multi-point locks to all external doors, so you can feel safe in your new home. Mains wired smoke detectors ensure that you can sleep safe in the knowledge that your home is being monitored. UPVC windows help with security, and are of course low maintenance leaving you free to enjoy your new home and your leisure time.



BUILT-IN WARDROBES & STORAGE

Most of our new homes benefit from at least one stunning built in wardrobe, which you can style to suit your taste and decor. Where possible we have also provided cupboards for extra storage (you can never have enough, and we all need somewhere to store the Christmas tree!). Our friendly staff can give you full details... just ask!



CONNECTED

All homes at Chantrey Park can benefit from a fibre network for that all important broadband connection. All the wiring is brought into your new home, so you just have to sign up with a provider to get connected. Beautiful contemporary chrome switches and sockets are provided in key areas of your new home, and we even include USB sockets to make charging your phone or iPad (other brands are available!) as easy as possible.



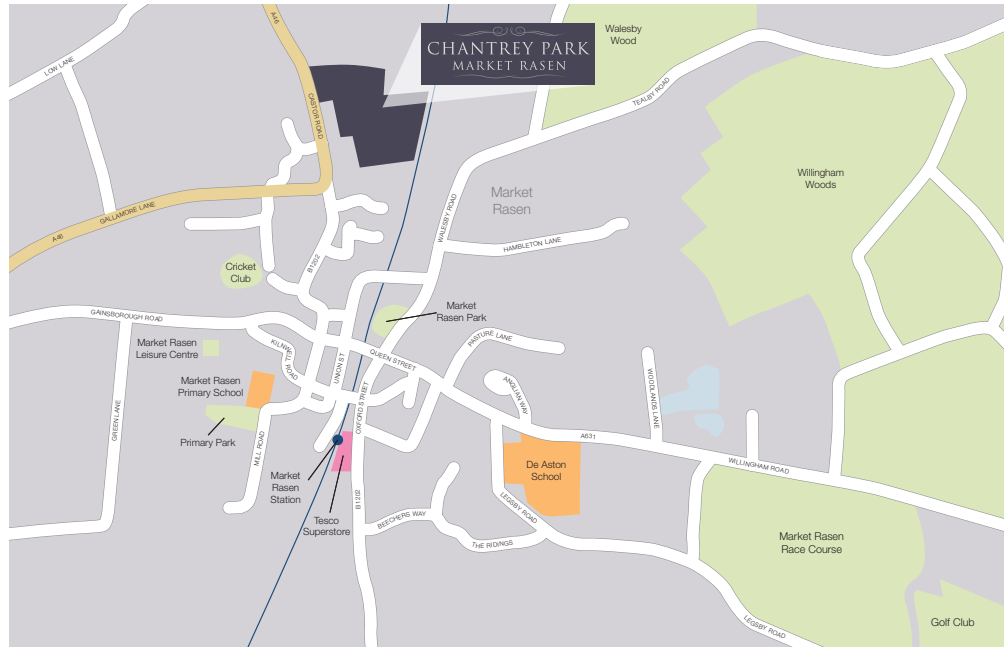
PEACE OF MIND

We are very proud of our 'A Rating' with the NHBC (the highest you can get), which means you can buy from us with confidence. The NHBC Warranty lasts for 10 years. Pretty much everything in the first two years is covered apart from wear and tear, and the following 8 years ensures that all the main structural parts of your home are covered to give complete peace of mind. You will be provided with full details of the Warranty.

Well over 95% of purchasers responding to our questionnaires say they would buy from us again, so we must be doing something right!



HOW TO FIND US



MARKET RASEN, LINCOLNSHIRE

43



We look forward to welcoming you to Chantrey Park

Chantrey Park is just off the A46, less than 1 mile north of Market Rasen town centre.

You will find us located off Caistor Road, Market Rasen, Lincolnshire. Set your sat nav to LN8 3JA.

Contact our Marketing Suite on 01673 353110 or email sales.chantreypark@chestnuthomes.co.uk



CHANTREY PARK MARKET RASEN



We look forward to welcoming you to Chantrey Park

Set your sat nav to LN8 3JA.

Contact us on - 01673 353110

sales.chantreypark@chestnuthomes.co.uk

 **ChestnutHomes**

chestnuthomes.co.uk

Find us on

